

# High Cube Warehouse/Distribution Facility with Paved Yard Area

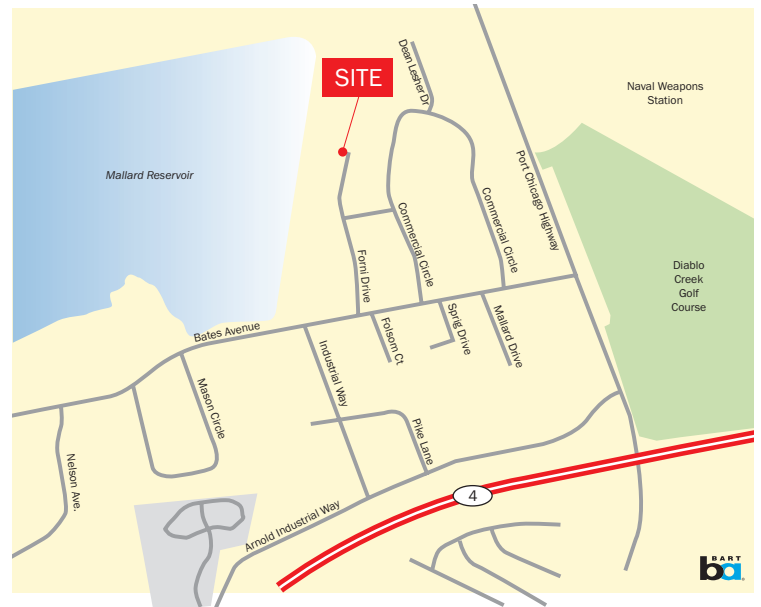
5060 Forni Drive, Suite D | Concord, CA



## ±25,200 SF for Lease in North Concord

### PROPERTY HIGHLIGHTS

- ◆ ±2,280 SF of First Class Office space including reception area, six (6) private offices, conference room, break room and two (2) restrooms
- ◆ Eight (8) Dock High Loading Doors
- ◆ One (1) Grade Level Loading Door (12' x 14')
- ◆ 24' Minimum Ceiling Clearance
- ◆ 100 Amps, 277/480 Volt, 3 Phase Electrical
- ◆ Skylights and sprinklered throughout
- ◆ Superb access to I-680, Hwy. 4, and Hwy. 242
- ◆ Ideal for a Variety of Distribution, Storage, Sales, Service and Light Manufacturing Uses
- ◆ Fenced, paved (concrete) Yard area contiguous to warehouse



**Graden Travis** Senior Managing Director 925.974.0104 [gtravis@ngkf.com](mailto:gtravis@ngkf.com) CA RE License #00871716

**Newmark  
Knight Frank**

1333 N. California Blvd., Suite 343, Walnut Creek, CA 94596 T 925.974.0100

[www.ngkf.com](http://www.ngkf.com)

Procuring broker shall only be entitled to a commission calculated in accordance with the rates approved by our principal only if such procuring broker executes a brokerage agreement acceptable to us and our principal and the conditions as set forth in the brokerage agreement are fully and unconditionally satisfied. Although all information furnished regarding property for sale, rental, or financing is from sources deemed reliable, such information has not been verified and no express representation is made nor is any to be implied as to the accuracy thereof and it is submitted subject to errors, omissions, change of price, rental or other conditions, prior sale, lease or financing, or withdrawal without notice and to any special conditions imposed by our principal.

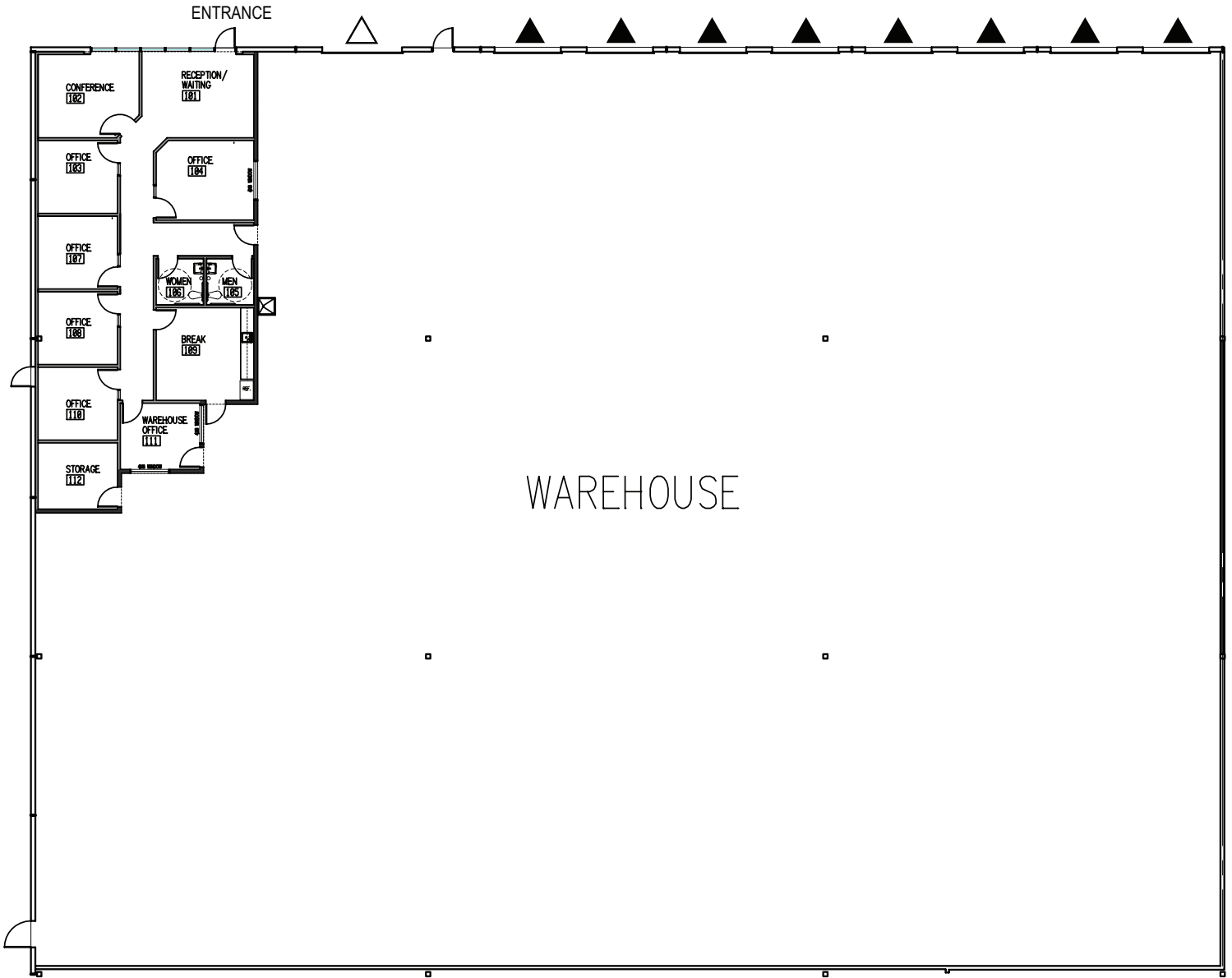
18-0526-04/18

# High Cube Warehouse/Distribution Facility with Paved Yard Area

5060 Forni Drive, Suite D | Concord, CA



## FLOOR PLAN



△ = Grade Level Door    ▲ = Dock High Door

**Graden Travis** Senior Managing Director 925.974.0104 [gtravis@ngkf.com](mailto:gtravis@ngkf.com) CA RE License #00871716

# Newmark Knight Frank

1333 N. California Blvd., Suite 343, Walnut Creek, CA 94596 T 925.974.0100

[www.ngkf.com](http://www.ngkf.com)

Procuring broker shall only be entitled to a commission calculated in accordance with the rates approved by our principal only if such procuring broker executes a brokerage agreement acceptable to us and our principal and the conditions as set forth in the brokerage agreement are fully and unconditionally satisfied. Although all information furnished regarding property for sale, rental, or financing is from sources deemed reliable, such information has not been verified and no express representation is made nor is any to be implied as to the accuracy thereof and it is submitted subject to errors, omissions, change of price, rental or other conditions, prior sale, lease or financing, or withdrawal without notice and to any special conditions imposed by our principal.