

2221 Commerce Avenue

Suite G, Concord | Units A1, B1, C1, D1, E1 & F1



±7,200 Rentable Square Feet Available

As exclusive agents, we are pleased to offer the following space for lease:

PROPERTY HIGHLIGHTS

- ◆ ±7,200 total square feet of Office/Warehouse space
- ◆ Includes ±5,400 square feet of Office space
- ◆ Eighteen (18') foot minimum ceiling clearance
- ◆ Amenities nearby include restaurants, hotels, golf course and Buchanan Field Airport
- ◆ Walking distance from Big "C" health club
- ◆ Approximately 1/4 mile from Highway 242 on and off ramp
- ◆ On-site and street parking available
- ◆ Skylights and ceiling in the warehouse

COMMENTS

Located in the heart of Concord's commercial/light industrial district, this office/warehouse benefits easy from access to Highway 242 and Interstate 680, glass storefronts, and ample amenities nearby.

Graden Travis Senior Managing Director 925.974.0104 gtravis@ngkf.com CA RE License #00871716

Tyler Epting Managing Director 925.974.0238 tepting@ngkf.com CA RE License #01317533

**Newmark
Knight Frank**

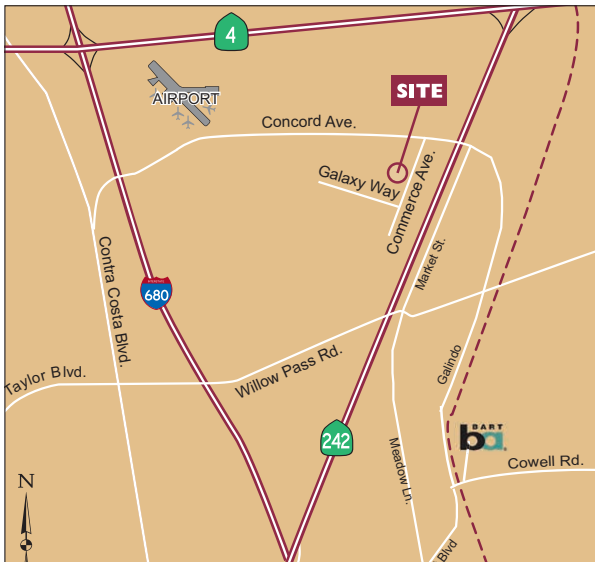
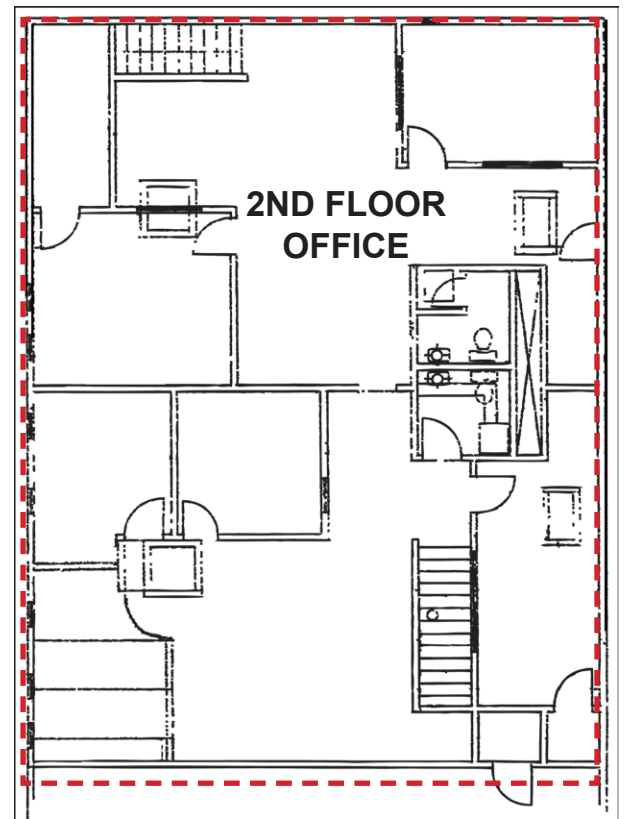
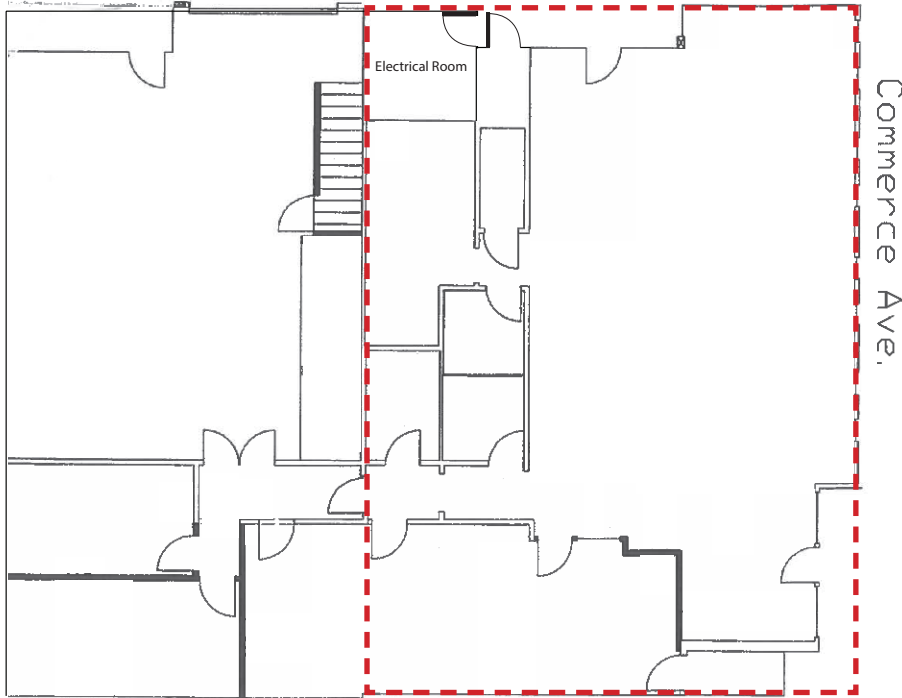
1333 N. California Blvd., Suite 343, Walnut Creek, CA 94596 T 925.974.0100

www.ngkf.com

Procuring broker shall only be entitled to a commission calculated in accordance with the rates approved by our principal only if such procuring broker executes a brokerage agreement acceptable to us and our principal and the conditions as set forth in the brokerage agreement are fully and unconditionally satisfied. Although all information furnished regarding property for sale, rental, or financing is from sources deemed reliable, such information has not been verified and no express representation is made nor is any to be implied as to the accuracy thereof and it is submitted subject to errors, omissions, change of price, rental or other conditions, prior sale, lease or financing, or withdrawal without notice and to any special conditions imposed by our principal.

2221 Commerce Avenue

Suite G, Concord | Units A1, B1, C1, D1, E1 & F1



Graden Travis Senior Managing Director 925.974.0104 gtravis@ngkf.com CA RE License #00871716

Tyler Epting Managing Director 925.974.0238 tepting@ngkf.com CA RE License #01317533

**Newmark
Knight Frank**

1333 N. California Blvd., Suite 343, Walnut Creek, CA 94596 T 925.974.0100

www.ngkf.com

Procuring broker shall only be entitled to a commission calculated in accordance with the rates approved by our principal only if such procuring broker executes a brokerage agreement acceptable to us and our principal and the conditions as set forth in the brokerage agreement are fully and unconditionally satisfied. Although all information furnished regarding property for sale, rental, or financing is from sources deemed reliable, such information has not been verified and no express representation is made nor is any to be implied as to the accuracy thereof and it is submitted subject to errors, omissions, change of price, rental or other conditions, prior sale, lease or financing, or withdrawal without notice and to any special conditions imposed by our principal.